

Perkins County

*PO Box 156
Grant, NE 69140*

*352-352-7560
Fax 308-352-7562*

PERKINS COUNTY DEPARTMENT OF ROADS SNOW REMOVAL PLAN AND POLICIES

The following snow removal plan covers the procedures that will be followed in the event of a winter snowstorm. Any of the operations may be altered by the Highway Superintendent or Road Foreman depending on weather conditions and/or emergencies.

Regular winter working hours between November 1 and April 1 are 7:00 a.m. to 4:00 p.m., Monday through Friday. No overtime work will be performed on weekdays, weekends or holidays unless authorized by the Board of Commissioners, Highway Superintendent or Road Foreman.

START UP PROCEDURES & SNOW ROUTES

In the event of a snowstorm, the Highway Superintendent or Road Foreman will contact the operators as to when to proceed with plowing operations.

All operators have a map of their area with emergency snow routes clearly marked. These routes will be followed by priority and will only be deviated from in cases of emergency or extreme weather. After the prioritized routes (paved roads) have been cleared, a systematic approach will be taken to clear the rest of the area, with the school bus routes taking priority. The roadways with the highest vehicular traffic per day will be the next priority. In order of priority residential properties and business facilities by their State's Functional Classification, Other Arterial Roads, Collector Roads, then Local Roads.

- 1. Emergency Snow Removal Priority Route Maps--** Snow removal priority route maps can be found at https://perkinscounty.ne.gov/webpages/roads/highway_department.html. Snow removal maps will be mailed to all school districts and posted at Perkins County Post Office.
- 2. Paved roads--** Paved roads will always be the number one priority in Perkins County. When one inch or more snow accumulation is received, the Road Foreman will be dispatched to assess the public's safety and driving conditions during work hours. When motor graders need to be used, blade paved roads to remove as much snow and ice as possible without harming the pavement surface. Snow will be plowed out to a minimum of two feet beyond pavement edge, where possible, so snow will melt away from the road and not back on it causing icy conditions.
- 3. Gravel Roads--** No operators or equipment will be dispatched for snow removal on gravel roads until at least four inches or more of snow has accumulated. Snow and wind conditions will determine when plowing operations do not proceed due to poor visibility, safety conditions, snowfall per hour, etc. Snow removal will not proceed until visibility is no longer a problem. Snowplow blades will plow at one to two inches above gravel road to keep from removing gravel off the road. Road Foreman will make changes according to wind conditions. In very heavy snow, the priority routes will be opened with one plow width before starting secondary routes. Road Foreman will determine if large drifts will be cleared farther than one plow width before all other roads are cleared. Motor grader operators are responsible for clearing intersections where gravel and pavement meet. Unimproved roads will not be cleared unless there is an emergency. There are cases where the road department's equipment is not capable of clearing a single lane of traffic without tying up a motor grader in one area. If it is determined by the Road Foreman to have the

motor grader leave the area until other roadways are cleared to return, the blocked roadway will be marked with flags at each corresponding intersection of the blockage before the operator leaves the area. Additionally, the Road Foreman will notify the Sheriff's office of the road closure.

4. **Bridges--** All snow will be removed from bridges as roads are cleared. Remove snow beyond the bridge ends and guardrails 15 - 20 feet so snow will not melt back onto bridge causing ice conditions.

5. **Snow Fence--** Written permission will be obtained from landowners prior to installation of a snow fence on private property and kept on file in the Highway Superintendent's office. Dates of snow fence installation and removal will be stated with the written permission from landowner.

6. **Abandoned Vehicles/Stuck Motorists--** The Perkins County Sheriff's office will be notified when abandoned vehicles are found stuck in snowdrifts. The vehicle license number will be provided to the Sheriff's office so they can contact the owner. The Sheriff's office can make the decision to call a towing firm and bill the owner of the vehicle for towing services. Vehicles will only be removed from roadway or snowdrift by the county employee when the owner is present and able to attach chain or tow rope onto personal vehicle. If the owner of the vehicle is present and physically unable to attach chain or tow rope to the vehicle, the owner should approve means of attachment to the vehicle by county employee.

Updates to the Perkins County Department of Roads Snow Removal Plan and Policies will be made by the Perkins County Board of Commissioners and the Perkins County Highway Superintendent.

PERKINS COUNTY EMERGENCY SNOW REMOVAL ROUTES

The Perkins County Schools bus routes only run on the State Highways and from Highway 61 to Lutheran Trinity Church. The Wallace Public School bus routes are constantly changing to meet the school's and public's needs throughout the year. These routes can be found on request from the school district or from the Highway Superintendent.

The **light green lines** indicate emergency snow removal routes that have priority and will be opened to one way traffic in extreme weather before secondary roads. Secondary roads are indicated in **purple** and **black hyphenated lines**. Please contact the Perkins County Highway Superintendent's office at sleimer@perkinscounty.ne.gov if you have any questions or concerns.

*The **red lines** will be cleared according to the State Highway Department snow removal procedures. *


Attachments:

NDOR's Perkins County State Functional Classification Map

Or at <https://dot.nebraska.gov/media/wz5hfjb4/cfuncperkinssfc.pdf>

Perkins County's Waiver for Removing Stuck Vehicles

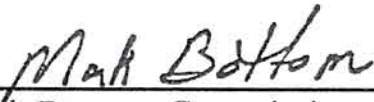
This Perkins County Department of Roads Snow Removal Plan and Policy was adopted by the Perkins County Commissioner on FEB. 3, 2025



Steven Tucker, Chairman



Darin Robertson, Commissioner



Mark Bottom, Commissioner

Steven Tucker
District III

Mark Bottom
District II

Darin Robertson
District I





Perkins County

***PO Box 156
Grant, NE 69140***

***352-352-7560
Fax 308-352-7562***

Waiver for Removing Stuck Vehicles

Due to public safety, it is extremely important to remove motorists and their vehicles from the inclement weather.

Understanding that removal of my vehicle from its present stuck condition could result in damage to my vehicle, I hereby waive, release, and hold harmless the County of Perkins, its officers, agents, and employees from all actions, causes of action, damages, claims or demands which I or my executors, administrators, or assigns may have against the County of Perkins, its officers, agents, and employees for any harm or injury, known or unknown, which they may have or may incur as a result of the removal of my vehicle from its present stuck condition, gross negligence excepted.

I have read this waiver, release, hold harmless and indemnification agreement and understand its terms and execute this agreement voluntarily and with full knowledge of its significance.

Signature

(Print name)

(Address)

Date

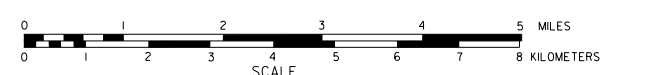
I, the County Employee, certified that I conducted a safety briefing with the motorist prior to removal of stuck vehicle. I contacted the legal guardian for consent to move forward if the motorist is a minor. I instructed the motorist to attach the chain or tow rope to motorist's vehicle. If the motorist was incapable of doing so, then I explained to the motorist how and that I would be attaching the chain or tow rope and received permission to do so.

County Employee Signature

Date

GENERAL HIGHWAY MAP PERKINS COUNTY NEBRASKA

PREPARED BY THE
DEPARTMENT OF ROADS
GIS/MAPPING SECTION
IN COOPERATION WITH THE
U.S. DEPARTMENT OF TRANSPORTATION
FEDERAL HIGHWAY ADMINISTRATION



INVENTORY DATE:
2004

REVISION HISTORY			
NAME	DATE	REVISION	
E. VEGARA	MARCH 2006	COUNTY	
M. COLLIER	APRIL 2004	NEW DEVELOPMENT	
J. COLCATHAN	SEPT. 2002	DOT SYSTEM	

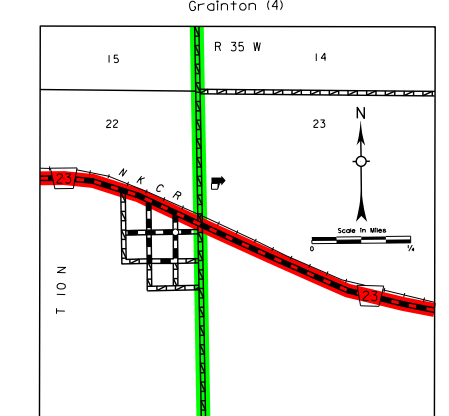
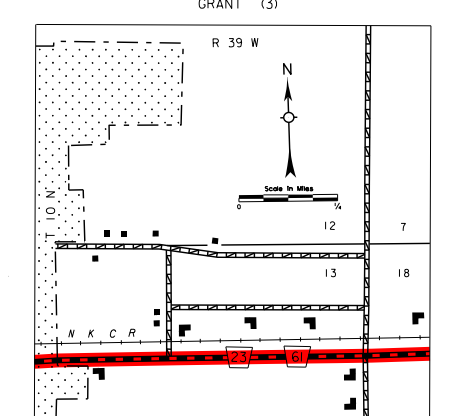
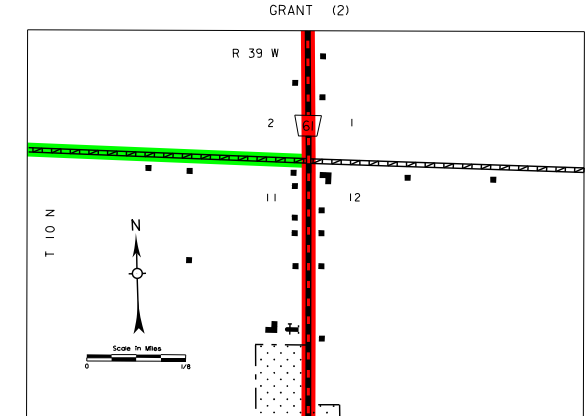
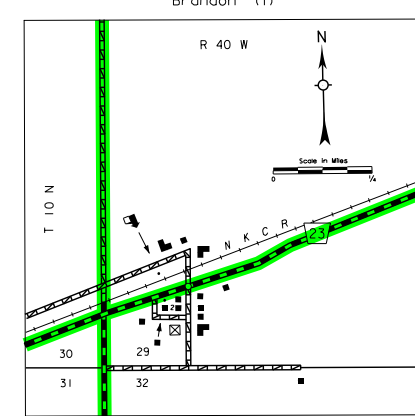
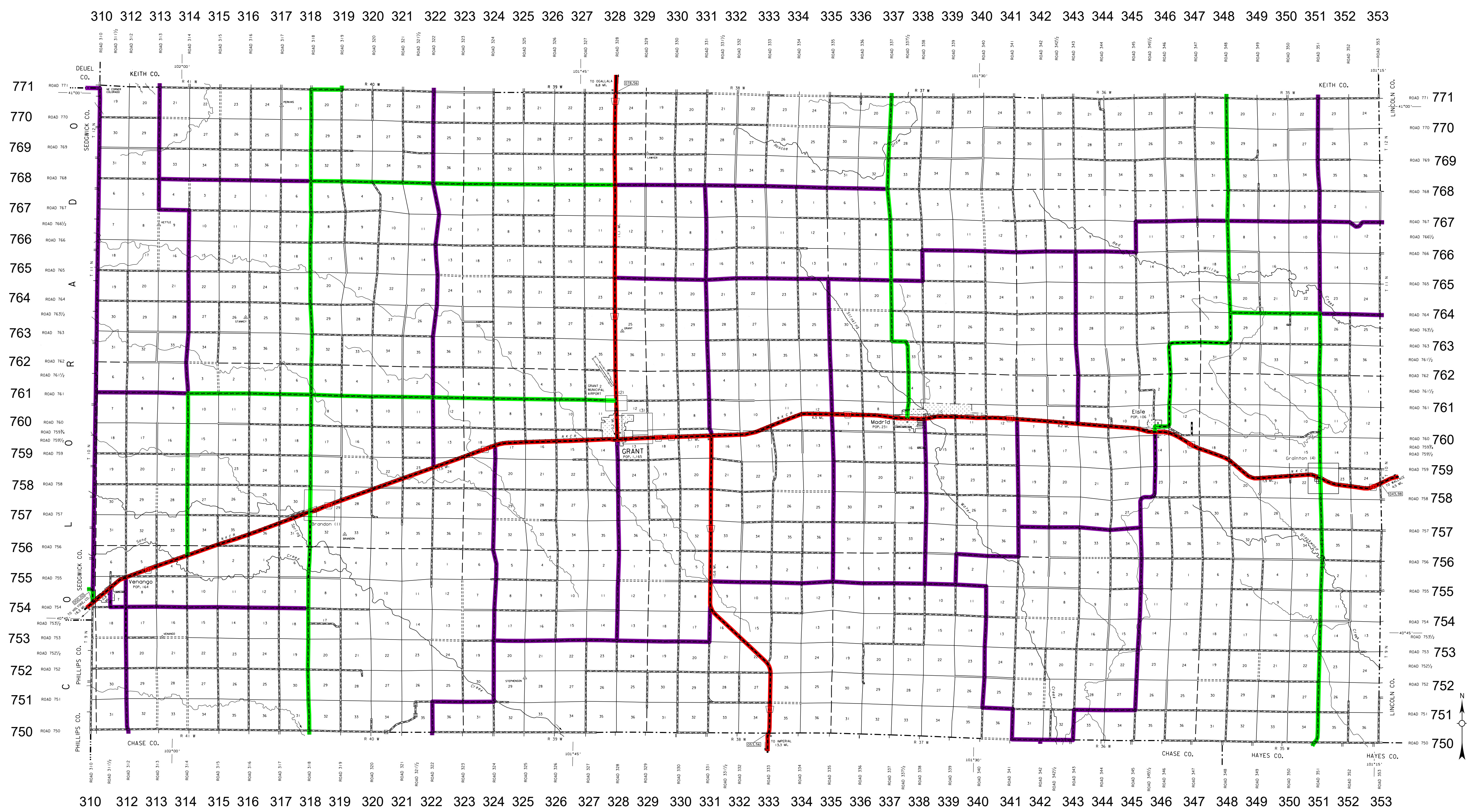
LEGEND

- | | |
|---|---|
| <ul style="list-style-type: none"> Primitive Road Unimproved Road Gravel or Graded Road Asphalt/Bituminous Surface Multiple Lane Undivided Highway Asphalt/Bituminous Surface Concrete/Bituminous Surface Multiple Lane Undivided Highway Control of Access Interstate Highway with Full Control of Access State-Numbered Highway State-Numbered Highway Spur State-Numbered Highway Link Highway Reference Point Number Interstate Exit Number Wide Stream Narrow Stream Irrigation Ditch Reservoir, Pond or Lake Reservoir With Dam Highway Bridge Any Type Small Bridges Closely Spaced General Bridge Arch Bridge Truss Bridge Pedestrian Underpass Railroad Overpass Railroad Underpass Railroad Dam with Road on Top Cattle Guard Dwelling Row of Dwellings Cemetery Church or Other Religious Institution Church with Cemetery Adjacent Hospital Business Industrial Park | <ul style="list-style-type: none"> Filling Station Grain Elevator Aggregate Pit Agricultural Experimental Station Educational Institutions Public Use Athletic Grounds Recreation Facilities Rest Area Ranger Station Fish Hatchery Community Hall Correctional Institution Tourist Court or Motel Monument - Small Museum Fire Station Courthouse Armory Highway Maintenance Yard Dump Area Sewage Disposal Plant Water Supply Stand Pipe Radio or TV Station Weight Station or Port of Entry Commercial or Municipal Airport State Boundary County Boundary Township Line Section Line Corporate Limit Lines Parks and Other Reservations Boundary Limits of Area Shown in Other Reports State Capitol County Seat Other Cities and Villages Incorporated City or Village Transportation Station Points Between which Distances are Measured Indicated Thus Latitude and Longitude |
|---|---|

LEGEND

- #### STATE FUNCTIONAL CLASSIFICATION
- INTERSTATE
 - EXPRESSWAY
 - MAJOR ARTERIAL
 - OTHER ARTERIAL
 - COLLECTOR
 - REMOTE RESIDENTIAL (Rural Only)
 - MINIMUM MAINTENANCE (Rural Only)
 - SCENIC RECREATION (Rural Only)
 - URBANIZED BOUNDARY

All Roads Not Otherwise Indicated Are Classified As Local



www.transportation.nebraska.gov

POPULATION AS OF 2010 CENSUS
STATE HIGHWAYS CORRECTED TO 2007
DIGITAL AERIAL PHOTOGRAPHY (DOADO)

This map is to be used for information only and is not intended to show ownership or to be definitive on which roads are public under Nebraska Law. The Nebraska Department of Roads makes no warranties, guarantees or representations for the accuracy of this information and assumes no liability for errors or omissions. Any inaccuracies should be reported to NDR.

LAMBERT CONFORMAL CONIC PROJECTION
1883 NORTH AMERICAN DATUM
NEBRASKA COORDINATE SYSTEM

