



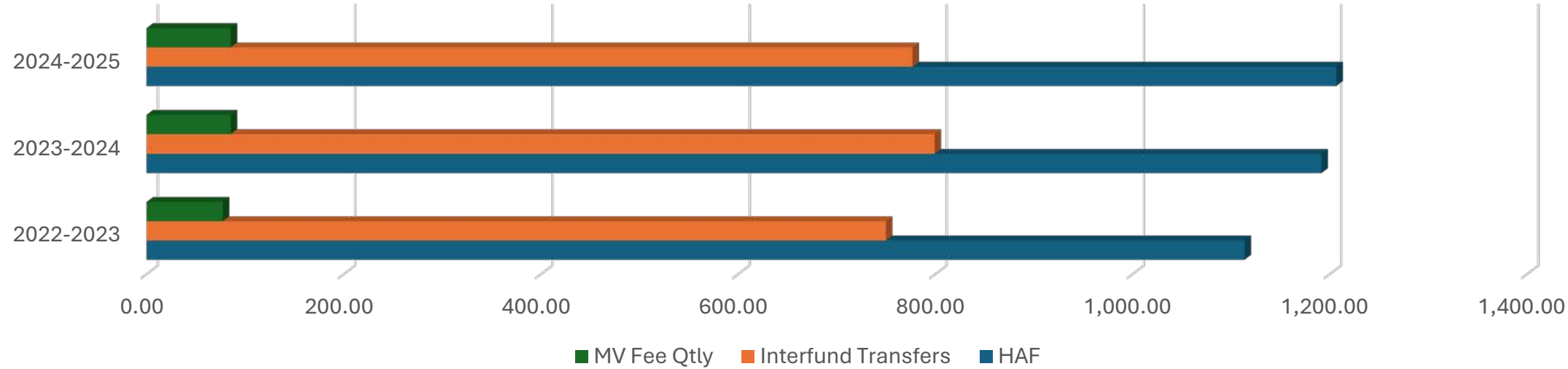
One- and Six- Year Plan



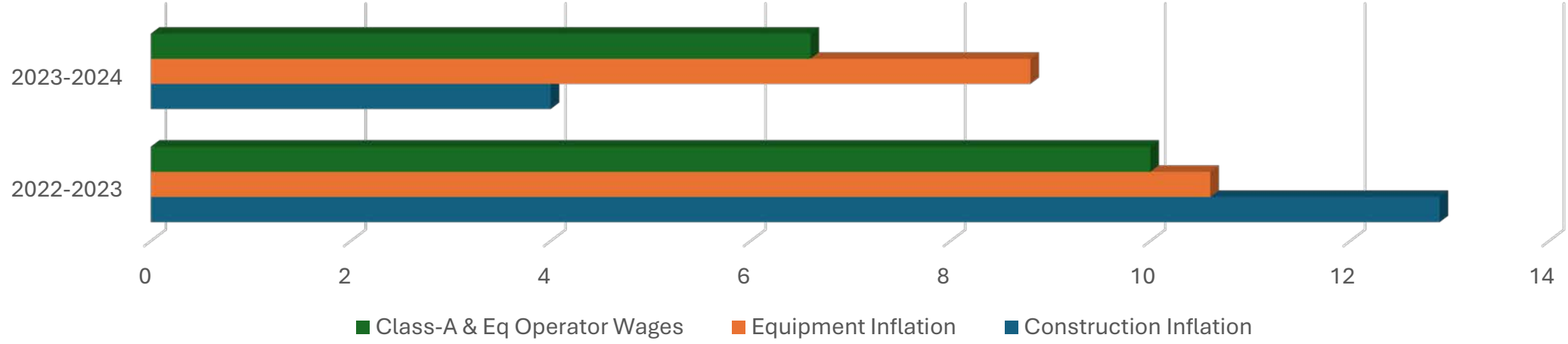
COUNTY ROADS IMPROVEMENT PROJECTS

2024 – 2025 PERKINS COUNTY ROADS REVENUE

Revenue in the Thousands



National Inflation Rates Increases

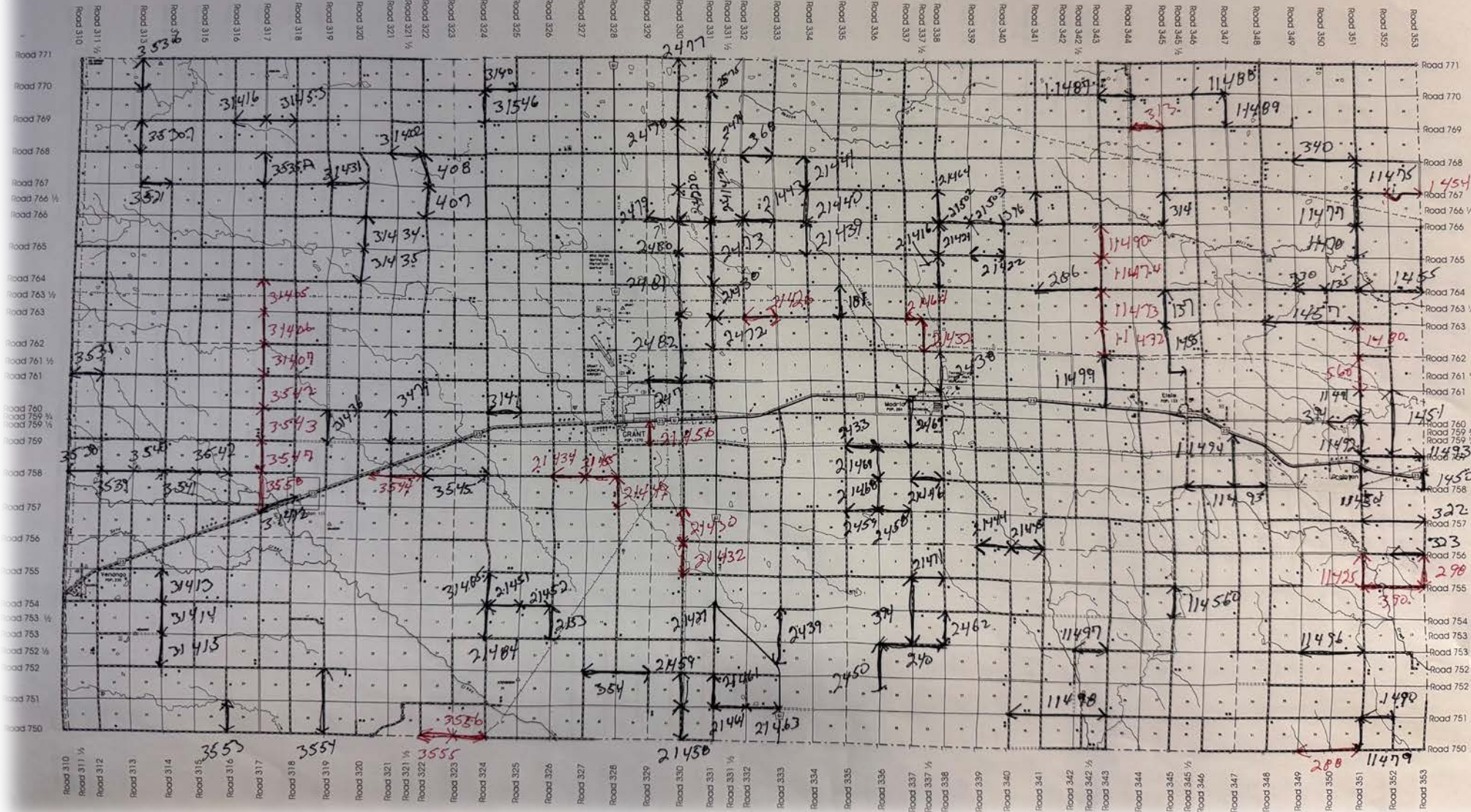


- a) Previous One- and Six- Year Plan
- b) Condition of assets – preservation
- c) Safety – Crash history, trends, “hot” spots
- d) Traffic volumes – trends, development/growth
- e) Hierarchy – classification, school routes, bus routes
- f) Coordination – other works and projects
- g) Public demand- citizens, commissioners, road dept.
- h) Costs – of works/projects; material availability
- i) Funding availability – inflation

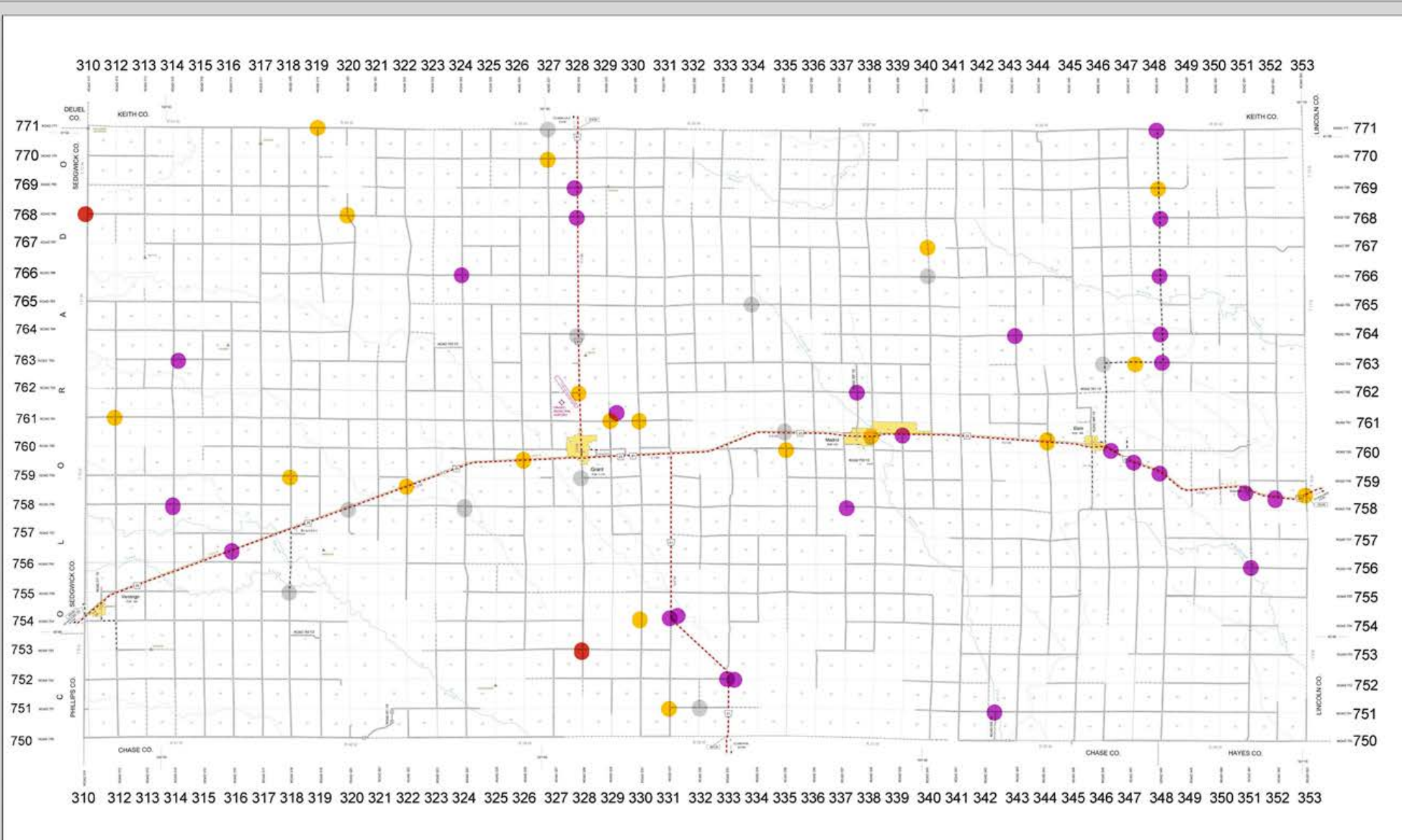
Perkins County Nebraska

2024

2025 to 2030



PRIOR COUNTY CRASH HISTORY 2020-2025



GENERAL HIGHWAY MAP PERKINS COUNTY NEBRASKA 2020

771
770
769
768
767
766
765
764
763
762
761
760
759
758
757
756
755
754
753
752
751
750

310 312 313 314 315 316 317 318 319 320 321 322 323 324 325 326 327 328 329 330 331 332 333 334 335 336 337 338 339 340 341 342 343 344 345 346 347 348 349 350 351 352 353

STATE HIGHWAYS
 - 401
 - 402
 - 403
 - 404
 - 405
 - 406
 - 407
 - 408
 - 409
 - 410
 - 411
 - 412
 - 413
 - 414
 - 415
 - 416
 - 417
 - 418
 - 419
 - 420
 - 421
 - 422
 - 423
 - 424
 - 425
 - 426
 - 427
 - 428
 - 429
 - 430
 - 431
 - 432
 - 433
 - 434
 - 435
 - 436
 - 437
 - 438
 - 439
 - 440
 - 441
 - 442
 - 443
 - 444
 - 445
 - 446
 - 447
 - 448
 - 449
 - 450
 - 451
 - 452
 - 453
 - 454
 - 455
 - 456
 - 457
 - 458
 - 459
 - 460
 - 461
 - 462
 - 463
 - 464
 - 465
 - 466
 - 467
 - 468
 - 469
 - 470
 - 471
 - 472
 - 473
 - 474
 - 475
 - 476
 - 477
 - 478
 - 479
 - 480
 - 481
 - 482
 - 483
 - 484
 - 485
 - 486
 - 487
 - 488
 - 489
 - 490
 - 491
 - 492
 - 493
 - 494
 - 495
 - 496
 - 497
 - 498
 - 499
 - 500

LOCAL ROADS
 - 1000
 - 1001
 - 1002
 - 1003
 - 1004
 - 1005
 - 1006
 - 1007
 - 1008
 - 1009
 - 1010
 - 1011
 - 1012
 - 1013
 - 1014
 - 1015
 - 1016
 - 1017
 - 1018
 - 1019
 - 1020
 - 1021
 - 1022
 - 1023
 - 1024
 - 1025
 - 1026
 - 1027
 - 1028
 - 1029
 - 1030
 - 1031
 - 1032
 - 1033
 - 1034
 - 1035
 - 1036
 - 1037
 - 1038
 - 1039
 - 1040
 - 1041
 - 1042
 - 1043
 - 1044
 - 1045
 - 1046
 - 1047
 - 1048
 - 1049
 - 1050

ROADWAY IDENTIFIERS
 - 1000
 - 1001
 - 1002
 - 1003
 - 1004
 - 1005
 - 1006
 - 1007
 - 1008
 - 1009
 - 1010
 - 1011
 - 1012
 - 1013
 - 1014
 - 1015
 - 1016
 - 1017
 - 1018
 - 1019
 - 1020
 - 1021
 - 1022
 - 1023
 - 1024
 - 1025
 - 1026
 - 1027
 - 1028
 - 1029
 - 1030
 - 1031
 - 1032
 - 1033
 - 1034
 - 1035
 - 1036
 - 1037
 - 1038
 - 1039
 - 1040
 - 1041
 - 1042
 - 1043
 - 1044
 - 1045
 - 1046
 - 1047
 - 1048
 - 1049
 - 1050

STRUCTURAL FEATURES
 - 1000
 - 1001
 - 1002
 - 1003
 - 1004
 - 1005
 - 1006
 - 1007
 - 1008
 - 1009
 - 1010
 - 1011
 - 1012
 - 1013
 - 1014
 - 1015
 - 1016
 - 1017
 - 1018
 - 1019
 - 1020
 - 1021
 - 1022
 - 1023
 - 1024
 - 1025
 - 1026
 - 1027
 - 1028
 - 1029
 - 1030
 - 1031
 - 1032
 - 1033
 - 1034
 - 1035
 - 1036
 - 1037
 - 1038
 - 1039
 - 1040
 - 1041
 - 1042
 - 1043
 - 1044
 - 1045
 - 1046
 - 1047
 - 1048
 - 1049
 - 1050

CULTURAL FEATURES
 - 1000
 - 1001
 - 1002
 - 1003
 - 1004
 - 1005
 - 1006
 - 1007
 - 1008
 - 1009
 - 1010
 - 1011
 - 1012
 - 1013
 - 1014
 - 1015
 - 1016
 - 1017
 - 1018
 - 1019
 - 1020
 - 1021
 - 1022
 - 1023
 - 1024
 - 1025
 - 1026
 - 1027
 - 1028
 - 1029
 - 1030
 - 1031
 - 1032
 - 1033
 - 1034
 - 1035
 - 1036
 - 1037
 - 1038
 - 1039
 - 1040
 - 1041
 - 1042
 - 1043
 - 1044
 - 1045
 - 1046
 - 1047
 - 1048
 - 1049
 - 1050

AREA FEATURES
 - 1000
 - 1001
 - 1002
 - 1003
 - 1004
 - 1005
 - 1006
 - 1007
 - 1008
 - 1009
 - 1010
 - 1011
 - 1012
 - 1013
 - 1014
 - 1015
 - 1016
 - 1017
 - 1018
 - 1019
 - 1020
 - 1021
 - 1022
 - 1023
 - 1024
 - 1025
 - 1026
 - 1027
 - 1028
 - 1029
 - 1030
 - 1031
 - 1032
 - 1033
 - 1034
 - 1035
 - 1036
 - 1037
 - 1038
 - 1039
 - 1040
 - 1041
 - 1042
 - 1043
 - 1044
 - 1045
 - 1046
 - 1047
 - 1048
 - 1049
 - 1050

BOUNDARIES
 - 1000
 - 1001
 - 1002
 - 1003
 - 1004
 - 1005
 - 1006
 - 1007
 - 1008
 - 1009
 - 1010
 - 1011
 - 1012
 - 1013
 - 1014
 - 1015
 - 1016
 - 1017
 - 1018
 - 1019
 - 1020
 - 1021
 - 1022
 - 1023
 - 1024
 - 1025
 - 1026
 - 1027
 - 1028
 - 1029
 - 1030
 - 1031
 - 1032
 - 1033
 - 1034
 - 1035
 - 1036
 - 1037
 - 1038
 - 1039
 - 1040
 - 1041
 - 1042
 - 1043
 - 1044
 - 1045
 - 1046
 - 1047
 - 1048
 - 1049
 - 1050

MEASUREMENT SYSTEMS
 - 1000
 - 1001
 - 1002
 - 1003
 - 1004
 - 1005
 - 1006
 - 1007
 - 1008
 - 1009
 - 1010
 - 1011
 - 1012
 - 1013
 - 1014
 - 1015
 - 1016
 - 1017
 - 1018
 - 1019
 - 1020
 - 1021
 - 1022
 - 1023
 - 1024
 - 1025
 - 1026
 - 1027
 - 1028
 - 1029
 - 1030
 - 1031
 - 1032
 - 1033
 - 1034
 - 1035
 - 1036
 - 1037
 - 1038
 - 1039
 - 1040
 - 1041
 - 1042
 - 1043
 - 1044
 - 1045
 - 1046
 - 1047
 - 1048
 - 1049
 - 1050

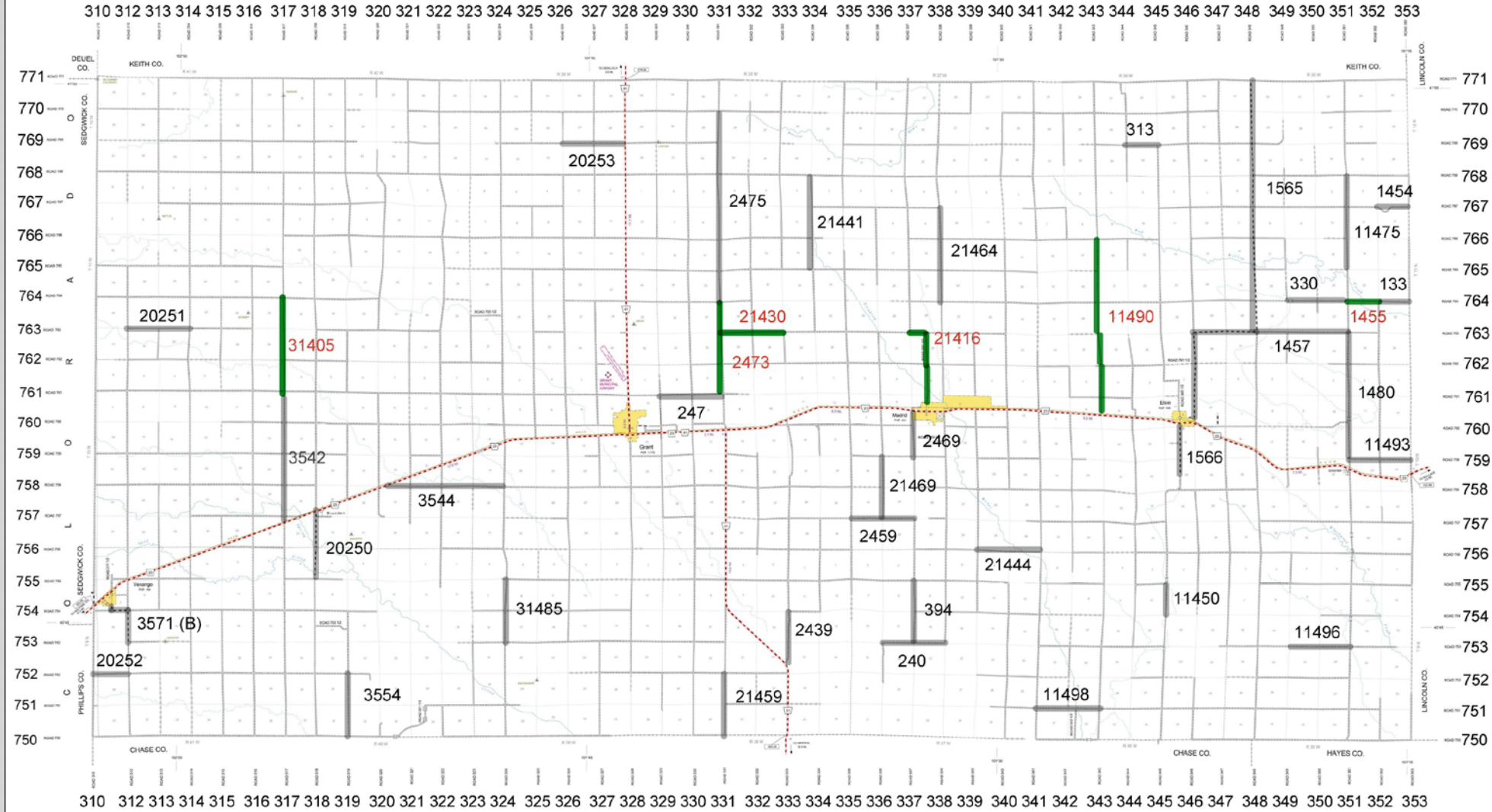
WATER FEATURES
 - 1000
 - 1001
 - 1002
 - 1003
 - 1004
 - 1005
 - 1006
 - 1007
 - 1008
 - 1009
 - 1010
 - 1011
 - 1012
 - 1013
 - 1014
 - 1015
 - 1016
 - 1017
 - 1018
 - 1019
 - 1020
 - 1021
 - 1022
 - 1023
 - 1024
 - 1025
 - 1026
 - 1027
 - 1028
 - 1029
 - 1030
 - 1031
 - 1032
 - 1033
 - 1034
 - 1035
 - 1036
 - 1037
 - 1038
 - 1039
 - 1040
 - 1041
 - 1042
 - 1043
 - 1044
 - 1045
 - 1046
 - 1047
 - 1048
 - 1049
 - 1050

NEBRASKA
 Good Life. Great Journey.

RED = FATALITY, ORANGE = INJURY, PURPLE = PROPERTY DAMAGE, GRAY = OTHER

PERKINS COUNTY 2025 IMPROVEMENT PLAN MAP

One- and Six- Year Plan



GENERAL HIGHWAY MAP PERKINS COUNTY NEBRASKA 2020

NEBRASKA
Good Life. Great Journey.
DEPARTMENT OF TRANSPORTATION

STATE HIGHWAYS
 - Interstate
 - State
 - County
 - Local

LOCAL ROADS
 - County
 - Township
 - Local

ROADWAY IDENTIFIERS
 - Milepost
 - Mileage
 - Mileage

STRUCTURAL FEATURES
 - Bridge
 - Culvert
 - Tunnel

CULTURAL FEATURES
 - Monument
 - Marker

AREA FEATURES
 - Lake
 - Pond
 - Stream

BOUNDARIES
 - County
 - Township

MEASUREMENT SYSTEMS
 - Feet
 - Meters

WATER FEATURES
 - Lake
 - Pond
 - Stream

ONE- YEAR PLAN IS IN GREEN SIX- YEAR IS IN GRAY

PERKINS COUNTY ONE- YEAR IMPROVEMENT PLANS

One- and Six- Year Plan

DISTRICT #1

Priority #	Project #	Length (Miles)	Functional Classification	Title 428 Standards Table	Location Intersections	Type of Improvement	ADT/ %HT	Projected Lane/Shoulder Width	Estimated Cost (Thousands)
1	11490	5.4	Minor/Collector	001.03I	Road 343 from 766 to Hwy 23	Roadway Reconstruction: Significant modifications to roadway's height	40/<10%	10 ft/3 ft	88.4
2	1455	1.0	Minor/Collector	001.03I	Road 764 from 351 to 352	Roadway Reconstruction: Significant modifications to roadway's height	35/>10%	10 ft/3 ft	16.37

DISTRICT #2

Priority #	Project #	Length (Miles)	Functional Classification	Title 428 Standards Table	Location Intersections	Type of Improvement	ADT/ %HT	Projected Lane/Shoulder Width	Estimated Cost (Thousands)
1	21416	3.6	Major Collector/Other Arterial	001.03H	Road 337 ½ from Stone St. Madrid to 763/Road 763 from 337 ½ to 337	Roadway Reconstruction: Significant modifications to roadway's height	75/>10%	10 ft/4 ft	62.32
2	2473	3.0	Minor/Collector	001.03I	Road 331 from 764 to 761	Roadway Reconstruction: Significant modifications to roadway's height	60/<10%	10 ft/4 ft	51.93
3	21430	2.0	Local/Local	001.03J	Road 763 from 331 to 333	Roadway Reconstruction: Significant modifications to roadway's height	40/<10%	10 ft/3 ft	32.74

DISTRICT #3

Priority #	Project #	Length (Miles)	Functional Classification	Title 428 Standards Table	Location Intersections	Type of Improvement	ADT/ %HT	Projected Lane/shoulder Width	Estimated Cost (Thousands)
1	31405	3.0	Local/Local	001.03J	Road 317 start at 764 to 761	Roadway Reconstruction: Significant modifications to roadway's height	55/>10%	10 ft /4 ft	51.93

PERKINS COUNTY SIX- YEAR IMPROVEMENT PLANS

DISTRICT #1

Priority #	Project #	Length (Miles)	Functional Classification	Title 428 Standards Table	Location Intersections	Type of Improvement	ADT/ %HT	Projected Lane/Shoulder Width	Estimated Cost (Thousands)
1	1480	4.0	Major Collector /Other Arterial	001.03H	Road 351 from 763 to 759	Roadway Reconstruction: Significant modifications to roadway's height	95/>10%	10 ft/4 ft	69.24
2	C 68 1565	13.4	Major Collector /Other Arterial	001.03H	Road 348 from 770 to 763/ Road 763 from 348 to 346/ 346 from 763 to 76180	Road Restoration: Paint Lines and strips	170/>10 %	11 ft/4 ft	35
3	C 68 1566	1.6	Minor/Collector	001.03I	Road 345.5 from Hwy 23 to 75850	Road Restoration: Paint Lines and strips	75/>10%	11 ft/4 ft	12
4	1457	3.0	Local/Local	001.03J	Road 763 from 348 to 351	Roadway Reconstruction: Significant modifications to roadway's height	70/>10%	10 ft/4 ft	51.93
5	11493	2.0	Local/Local	001.03J	Road 759 from 351 to 353	Roadway Reconstruction: Significant modifications to roadway's height	25/<10%	10 ft/3 ft	32.74
6	11450	1.0	Minor/Collector	001.03I	Road 345 from 755 to 754	Roadway Reconstruction: Significant modifications to roadway's height	45/<10%	10 ft/3 ft	16.37
7	11498	2.0	Local/Local	001.03J	Road 751 from 341 to 343	Roadway Reconstruction: Significant modifications to roadway's height	35/<10%	10 ft/3 ft	32.74
8	11496	2.0	Local/Local	001.03J	Road 753 from 349 to 351	Roadway Reconstruction: Significant modifications to roadway's height	35/<10%	10 ft/3 ft	32.74
9	11475	3.0	Major/Collector	001.03H	Road 351 from 765 to 768	Roadway Reconstruction: Significant modifications to roadway's height	70/<10%	10 ft/4 ft	51.93
10	330	2.0	Major Collector/ Other Arterial	001.03H	Road 764 for 349 to 351	Roadway Reconstruction: Significant modifications to roadway's height	50/>10%	10 ft/4 ft	34.62

PERKINS COUNTY SIX- YEAR IMPROVEMENT PLANS

One- and Six- Year Plan

DISTRICT #1

Priority #	Project #	Length (Miles)	Functional Classification	Title 428 Standards Table	Location Intersections	Type of Improvement	ADT/ %HT	Projected Lane/Shoulder Width	Estimated Cost (Thousands)
11	133	1.0	Minor/Collector	001.03I	Road 764 from 352 to 353	Roadway Reconstruction: Significant modifications to roadway's height	40/<10%	10 ft/3 ft	16.37
12	1454	1.0	Minor/Collector	001.03I	Road 767 from 352 to 353	Roadway Reconstruction: Significant modifications to roadway's height	45/<10%	10 ft/3 ft	16.37
13	313	1.0	Local/Local	001.03J	Road 769 from 344 to 345	Roadway Reconstruction: Significant modifications to roadway's height	35/<10%	10 ft/3 ft	16.37

DISTRICT #2

Priority #	Project #	Length (Miles)	Functional Classification	Title 428 Standards Table	Location Intersections	Type of Improvement	ADT/ %HT	Projected Lane/Shoulder Width	Estimated Cost (Thousands)
1	247	1.9	Local/Local	001.03J	Road 761 from 329 to 331	Roadway Reconstruction: Significant modifications to roadway's height	45/<10%	10 ft/3 ft	31.1
2	2475	6.0	Minor/Collector	001.03I	Road 331 from 770 to 764	Roadway Reconstruction: Significant modifications to roadway's height	50/<10%	10 ft/4 ft	117.5
3	2469	1.3	Local/Local	001.03J	Road 337 from Hwy 23 to 759	Roadway Reconstruction: Significant modifications to roadway's height	35/<10%	10 ft/3 ft	21.28
4	21464	3.0	Minor/Collector	001.03I	Road 338 from 767 to 764	Roadway Reconstruction: Significant modifications to roadway's height	35/<10%	10 ft/3 ft	49.11
5	21469	2.0	Unimproved/Unimproved road	001.03J	Road 336 from 759 to 757	Roadway New Construction: Bring roadway up to local functional std	25/<10%	10 ft/3 ft	32.74
6	21444	2.0	Minor/Collector	001.03I	Road 756 from 339 to 341	Roadway Reconstruction: Significant modifications to roadway's height	35/<10%	10 ft/3 ft	32.74

PERKINS COUNTY SIX- YEAR IMPROVEMENT PLANS

One- and Six- Year Plan

DISTRICT #2

Priority #	Project #	Length (Miles)	Functional Classification	Title 428 Standards Table	Location Intersections	Type of Improvement	ADT/ %HT	Projected Lane/Shoulder Width	Estimated Cost (Thousands)
7	2439	1.7	Local/Local	001.03J	Road 333 from 754 to Hwy 61	Roadway Reconstruction: Significant modifications to roadway's height	50/<10%	10 ft/4 ft	29.43
8	21441	3.0	Local/Local	001.03J	Road 334 from 768 to 765	Roadway Reconstruction: Significant modifications to roadway's height	35/<10%	10 ft/3 ft	49.11
9	21459	2.0	Local/Local	001.03J	Road 331 from 752 to 750	Roadway Reconstruction: Significant modifications to roadway's height	50/<10%	10 ft/3 ft	32.74
10	2459	2.0	Local/Local	001.03J	Road 757 from 335 to 338	Roadway Reconstruction: Significant modifications to roadway's height	35/<10%	10 ft/3 ft	32.74
11	394	2.0	Local/Local	001.03J	Road 337 from 755 to 753	Roadway Reconstruction: Significant modifications to roadway's height	30/<10%	10 ft/3 ft	32.74
12	240	2.0	Local/Local	001.03J	Road 753 from 336 to 338	Roadway Reconstruction: Significant modifications to roadway's height	25/<10%	10 ft /3 ft	32.74

DISTRICT #3

Priority #	Project #	Length (Miles)	Functional Classification	Title 428 Standards Table	Location Intersections	Type of Improvement	ADT/ %HT	Projected Lane/Shoulder Width	Estimated Cost (Thousands)
1	C 68 20250	2.1	Major Collector/ Other Arterial	001.03H	Road 318 from Hwy 23 to 755	Roadway Resurfacing: Mill 2" and refill with 2" new wearing surface. Repaint lines and strips	85/<10%	11 ft/4 ft	536.7
2	C 68 3571 (B)	1.7	Minor/Collector	001.03I	Road 754 from 311.5 to 312/ Road 312 from 754 to 753	Roadway Resurfacing: Mill 2" and refill with 2" new wearing surface. Repaint lines and strips	130/<10%	11 ft/4 ft	472

PERKINS COUNTY SIX- YEAR IMPROVEMENT PLANS

DISTRICT #3

Priority #	Project #	Length (Miles)	Functional Classification	Title 428 Standards Table	Location Intersections	Type of Improvement	ADT/ %HT	Projected Lane/Shoulder Width	Estimated Cost (Thousands)
3	3542	4.7	Local/Local	001.03J	Road 317 from 764 to 757/ Road 757 from 317 to Hwy 23	Roadway Reconstruction: Significant modifications to roadway's height	55/>10%	10 ft/4 ft	81.36
4	3544	3.8	Local/Local	001.03J	Road 758 from Hwy 23 to 324	Roadway Reconstruction: Significant modifications to roadway's height	45/<10%	10 ft/3 ft	62.2
5	20251	2.0	Unimproved/Unimproved road	001.03J	Road 763 from 312 to 314	Roadway New Construction: Bring roadway up to local functional std	25/<10%	10 ft/3 ft	32.74
6	3554	2.0	Local/Local	001.03J	Road 319 from 750 to 752	Roadway Reconstruction: Significant modifications to roadway's height	35/<10%	10 ft/3 ft	32.74
7	31485	2.0	Minor/Collector	001.03I	Road 324 from 753 to 755	Roadway Reconstruction: Significant modifications to roadway's height	45/<10%	10 ft/3 ft	32.74
8	20252	1.1	Local/Local	001.03J	Road 752 from 310 to 312	Roadway Reconstruction: Significant modifications to roadway's height	25/>10%	10 ft/3 ft	18
9	20253	2.0	Local/Local	001.03J	Road 769 from 324 to 326	Roadway Rehabilitation: Modification to road base/add 2.5" Grading L/replace Gravel	40/>10%	10 ft/3 ft	36

Public Hearing was heard on 18 Feb 25 at 10:00 in the Commissioners room in Perkins County Courthouse

Highway Superintendent:
Steve Leimer

See Perkins County, Nebraska
Resolution 2025 -_4__